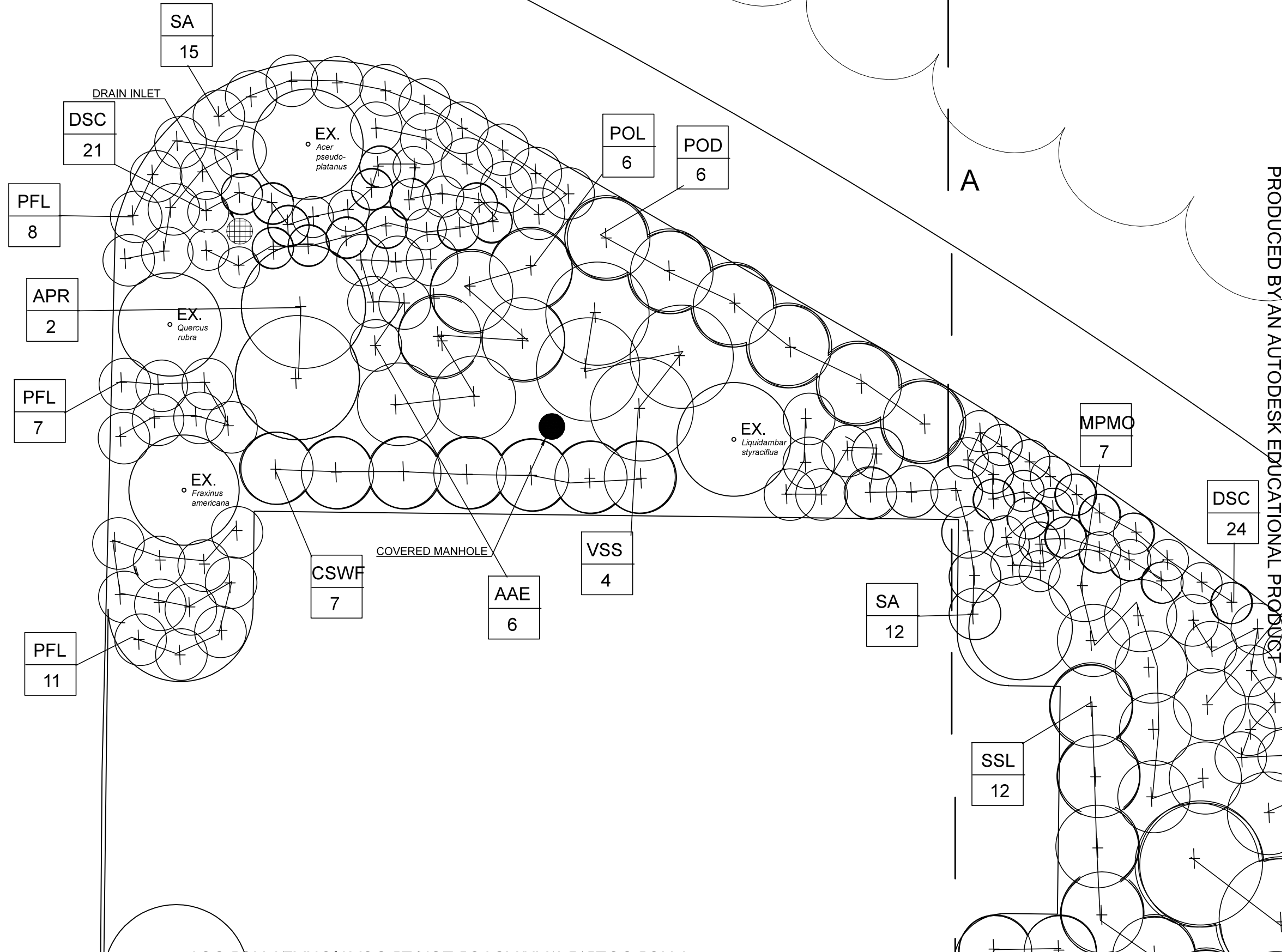


PRODUCED BY AN AUTODESK EDUCATIONAL PRODUCT

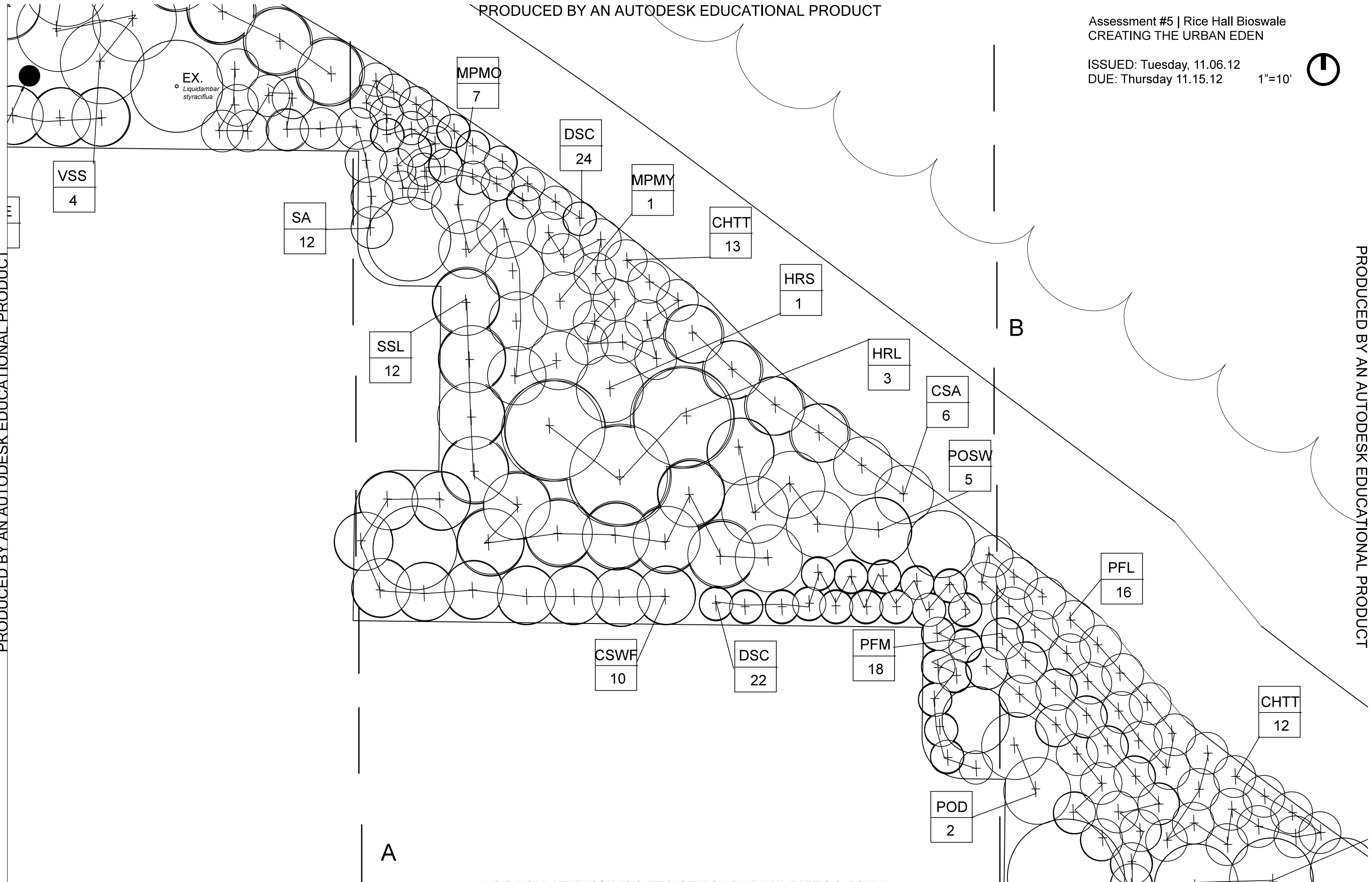
PRODUCED BY AN AUTODESK EDUCATIONAL PRODUCT





PRODUCED BY AN AUTODESK EDUCATIONAL PRODUCT

PRODUCED BY AN AUTODESK EDUCATIONAL PRODUCT

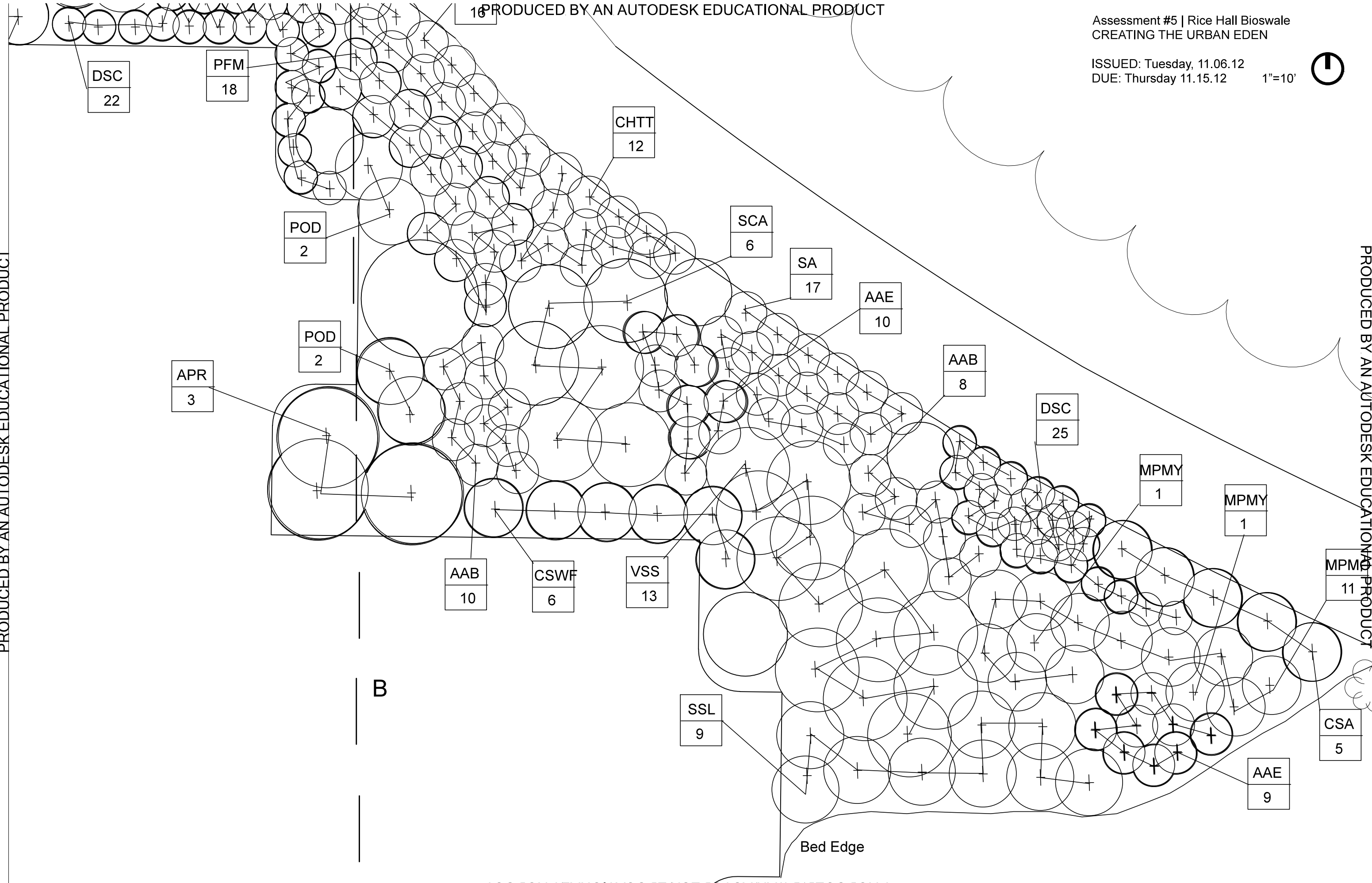




PRODUCED BY AN AUTODESK EDUCATIONAL PRODUCT

PRODUCED BY AN AUTODESK EDUCATIONAL PRODUCT

PRODUCED BY AN AUTODESK EDUCATIONAL PRODUCT



DSC
22

PFM
18

CHTT
12

SCA
6

SA
17

AAE
10

AAB
8

DSC
25

MPMY
1

MPMY
1

MPMY
11

CSA
5

AAE
9

SSL
9

VSS
13

CSWF
6

AAB
10

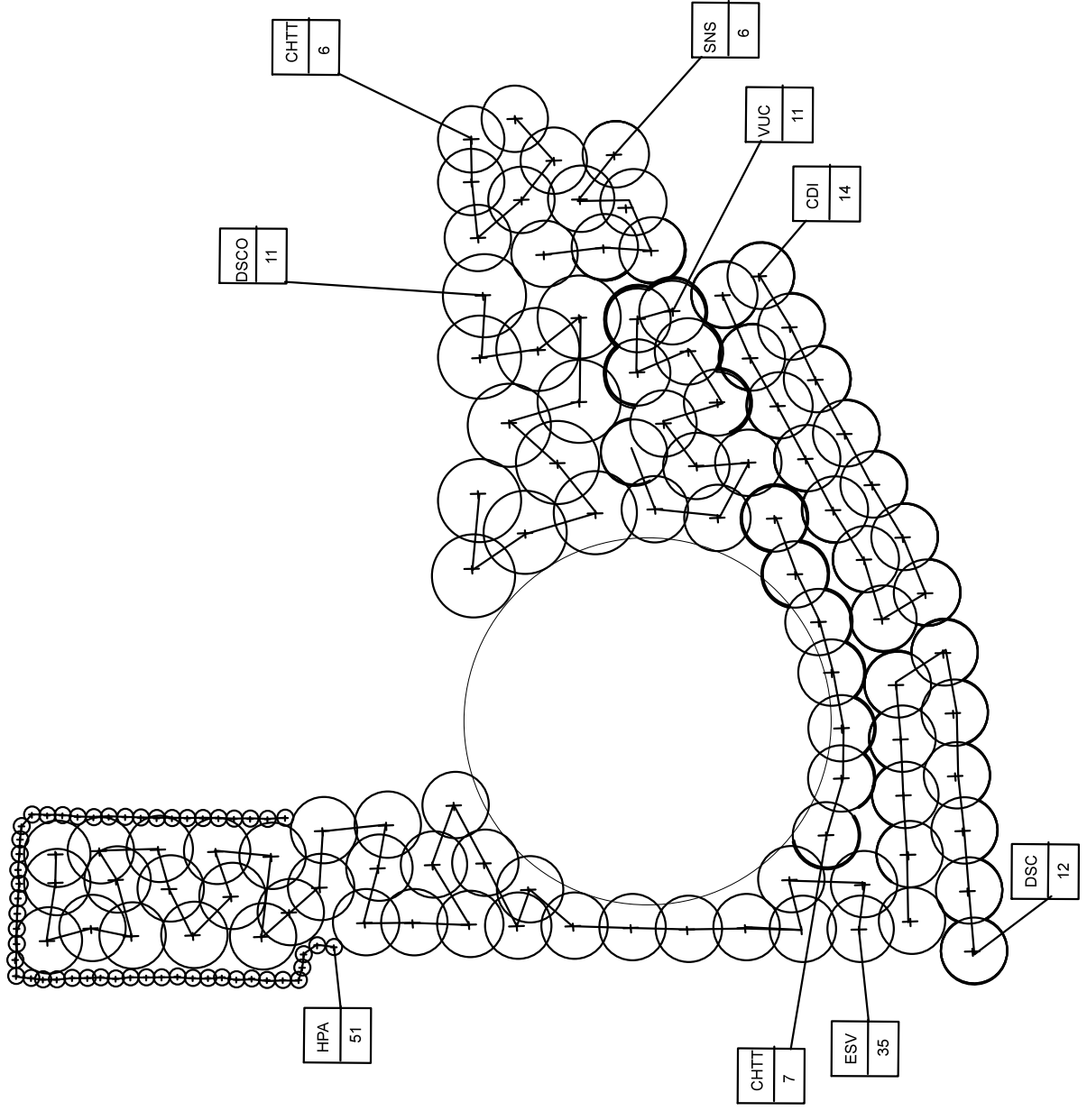
APR
3

POD
2

POD
2

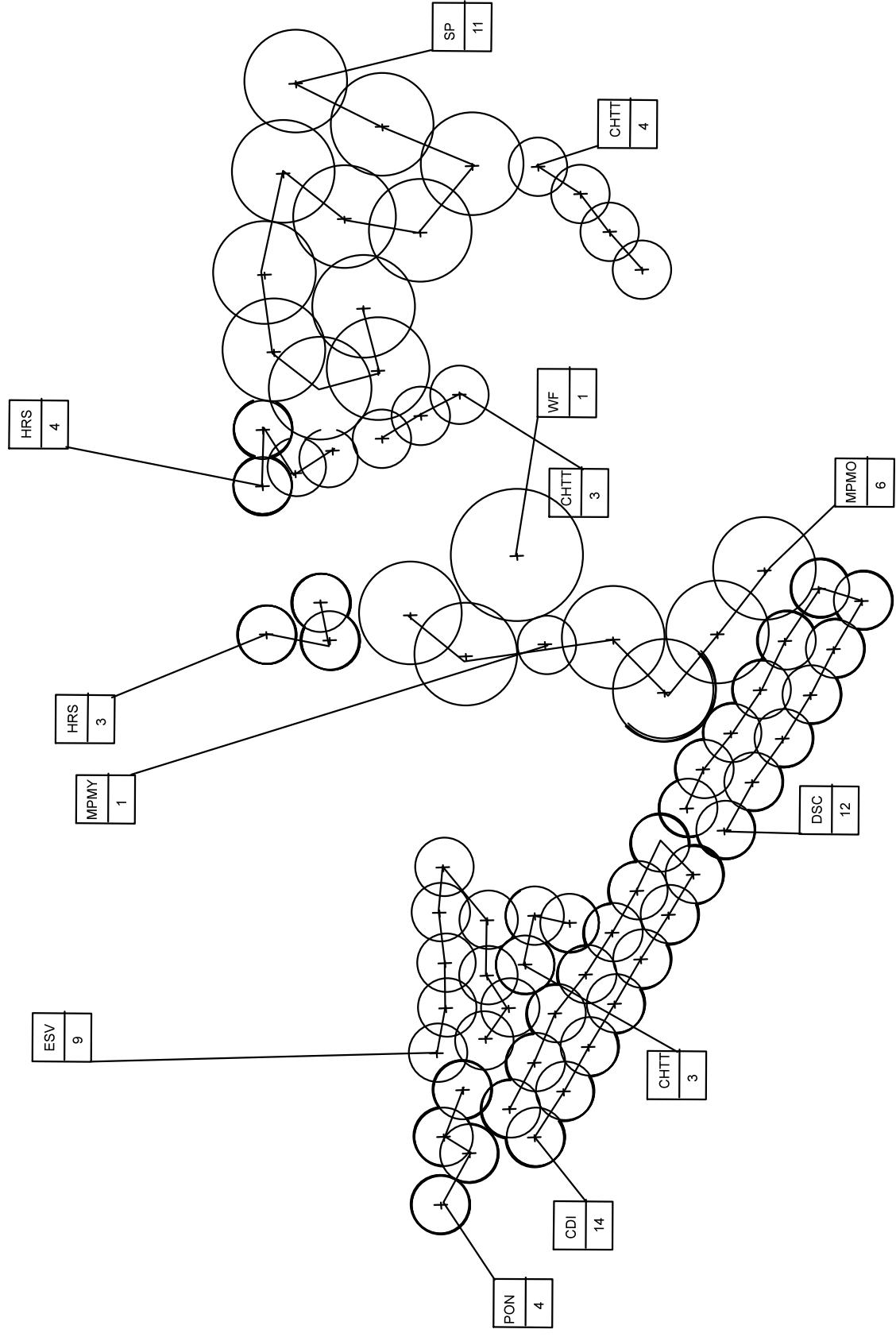
B

Bed Edge



A

A



Key	No.	Botanic Name	Common Name	Size	Root	Comments
APR	5	<i>Aesculus parviflora</i> 'Rogers'	Bottlebrush Buckeye	3'-4'	Cont.	
AMA	18	<i>Aronia arbutifolia</i> 'Brilliantissima'	Red Chokeberry	24"-30"	Cont.	
AMV	25	<i>Aronia arbutifolia</i> 'Erecta'	Red Chokeberry	24"-30"	Cont.	
CDI	28	<i>Callicarpa dichotoma</i> 'Issai'	Japanese Beautyberry	24"-30"	Cont.	
CSA	11	<i>Cornus sanguinea</i> 'Arctic Sun'	Blood Twig Dogwood	18"-24"	B&B	
CSWF	23	<i>Cornus sanguinea</i> 'Winter Flame'	Blood Twig Dogwood	24"-30"	B&B	
CHTT	25	<i>Cotoneaster horizontalis</i> 'Tom Thumb'	Rock Cotoneaster	18"-24"	Cont.	
DSCO	11	<i>Deutzia scabra</i> 'Codsall'	Fuzzy Deutzia	18"-24"	Cont.	
DSC	116	<i>Diervilla sessilifolia</i> 'Copper'	Dwarf Bush Honeysuckle	18"-24"	Cont.	
ESV	54	<i>Eleutherococcus sieboldianus</i> 'Variegatus'	Variegated Five Leaf Aralia	24"-30"	Cont.	
HRL	3	<i>Hippophae rhamnoides</i> 'Leikora'	Sea Buckthorn	3'-4'	Cont.	
HRS	8	<i>Hippophae rhamnoides</i> 'Sprite'	Sea Buckthorn	18"-24"	Cont.	
HAP	51	<i>Hydrangea anomala</i> ssp. <i>petiolaris</i>	Climbing Hydrangea	3'-4'	Cont.	Staked
MPMO	24	<i>Morella pensylvanica</i> 'Morton'	Bayberry	3'-4'	Cont.	
MPMY	4	<i>Morella pensylvanica</i> 'Myriman'	Bayberry	3'-4'	Cont.	
POD	10	<i>Physocarpus opulifolius</i> 'Diablo'	Common Ninebark	24"-30"	Cont.	
POL	6	<i>Physocarpus opulifolius</i> 'Luteus'	Common Ninebark	24"-30"	Cont.	
PON	4	<i>Physocarpus opulifolius</i> 'Nanus'	Common Ninebark	24"-30"	Cont.	
POSW	5	<i>Physocarpus opulifolius</i> 'Summer Wine'	Common Ninebark	24"-30"	Cont.	
PFL	42	<i>Potentilla fruticosa</i> 'Longacre'	Shrubby Cinquefoil	18"-24"	Cont.	
PFM	18	<i>Potentilla fruticosa</i> 'Marob'	Shrubby Cinquefoil	18"-24"	Cont.	
SA	44	<i>Salix arenaria</i>	Creeping Silver Willow	18"-24"	Cont.	
SCA	6	<i>Sambucus canadensis</i> 'Aurea'	American Elder	3'-4'	Cont.	

Key	No.	Botanic Name	Common Name	Size	Root	Comments
SSL	21	<i>Sorbaria sorbifolia</i> 'Laciniata'	Ural False Spirea	3'-4'	Cont.	
SNS	6	<i>Spiraea nipponica</i> 'Snowmound'	Nippon Spirea	24"-30"	Cont.	
SP	11	<i>Syringa pubescens ssp patula</i> 'Miss Kim'	Manchurian Lilac	24"-30"	Cont.	
VSS	17	<i>Viburnum sieboldii</i> 'Seneca'	Seneca Siebold Viburnum	3'-4'	B&B	
VUC	11	<i>Viburnum utile</i> 'Conoy'	Conoy Service Viburnum	3'-4'	B&B	
WF	1	<i>Weigela florida</i> 'Wine and Roses'	Weigela	9"-12"	Cont.	